



# CARTEC

## GST 2300 FA - Joint play detector up to 4 t axle load



### Key Features

- Test plates single control
- Plate movement in counter direction (4 ways)
- Plate movement in same direction (8 ways)
- Commands as per finger tip onto test lamp

#### Check-up of:

- axle suspension
- axle stub
- wheel bearing
- tie-rod ends
- stabilizer

- Choice of test modes via test lamp
- Easy and convenient operation owing to single-touch mode
- Automatic or manual operation at choice
- Automatic return of test plates into home position (parking position)
- Test lamp with 18 long-life LEDs
- Keypad with oil- and petro-resistance

### Specifications

Axle weight max. (t)	4
Temperature range (°C)	0 - 70
Test speed (mm/s)	50
Test movement total (mm)	50
Power supply (V / Hz)	400 / 50
Fuse rating (A)	10
Weight (kg)	81
Test plate - Length (mm)	663
Test plate - Width (mm)	663
Hydraulic unit - Height (mm)	390
Hydraulic unit - Width (mm)	610
Hydraulic unit - Depth (mm)	250
Hydraulic unit - Weight (kg)	35.6
Hydraulic unit - Operating pressure (bar)	160
Hydraulic unit - Oil Capacity (l)	6
Hydraulic unit - Power (kW)	1.5
Hydraulic unit - Operating power (kN power (kN)	11

## Options

Built-in frame for floor-level version  
Installation kit

---

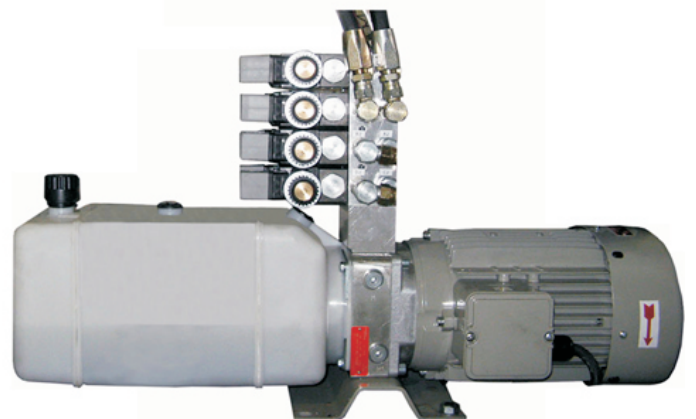
## Delivery

Test plates  
Switch cabinet  
Hydraulic aggregate  
Test lamp radio control

---

## Versions

230 V / 60 Hz



Pedidos:

**AME**  
**AUTO MAPRO EQUIPS**

☎ 93 784 49 37

automaproequips@automaproequips.com

[www.automaproequips.com](http://www.automaproequips.com)